



Uncovering the Story of San Francisco's

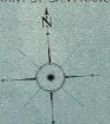
CITY CEMETERY

Alex Ryder & John Martini

THE COMMERCIAL PICTORIAL AND TOURIST MAP OF SAN FRANCISCO

IN COLORS AND ILLUSTRATED
WITH LITHO-ENGRAVED PICTURES
OF ALL PUBLIC BUILDINGS, PARKS, MONUMENTS
AND RECOMMENDED BUSINESS HOUSES, ETC.

DESIGNED, ENGRAVED & COPYRIGHTED BY
AUG. CHEVALIER
PUBLISHER
331 KEARNY ST. SAN FRANCISCO.

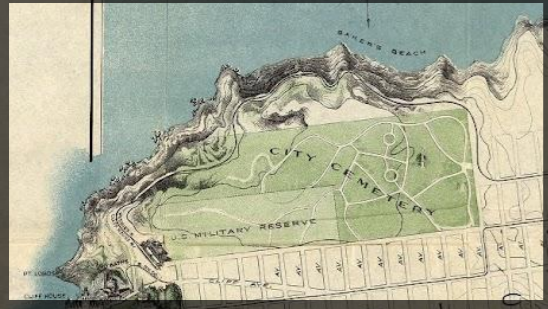
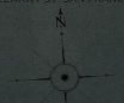


COPYRIGHT 1902 BY AUG. CHEVALIER

THE COMMERCIAL PICTORIAL AND TOURIST MAP OF SAN FRANCISCO

WITH LITHO-ENGRAVED PICTURES
OF ALL PUBLIC BUILDINGS PARKS MONUMENTS
AND RECOMMENDED BUSINESS HOUSES ETC.

DESIGNED, ENGRAVED & COPYRIGHTED BY
AUG. CHEVALIER
PUBLISHER
221 KEARNEY ST. SAN FRANCISCO



COPYRIGHT 1890 BY AUG. CHEVALIER



BAKER'S BEACH

CITY CEMETERY

U.S. MILITARY RESERVE

300

PT. LOBOS

CLIFF HOUSE

FERRIES & CLIFF HOUSE RY

S. RY. CO.

CLIFF HOUSE BATHS

CLIFF AVE.

AV.

AV.

AV.

AV.

AV.

AV.

AV.

AV.

AV.

AV.

AV.

AV.

AV.

AV.

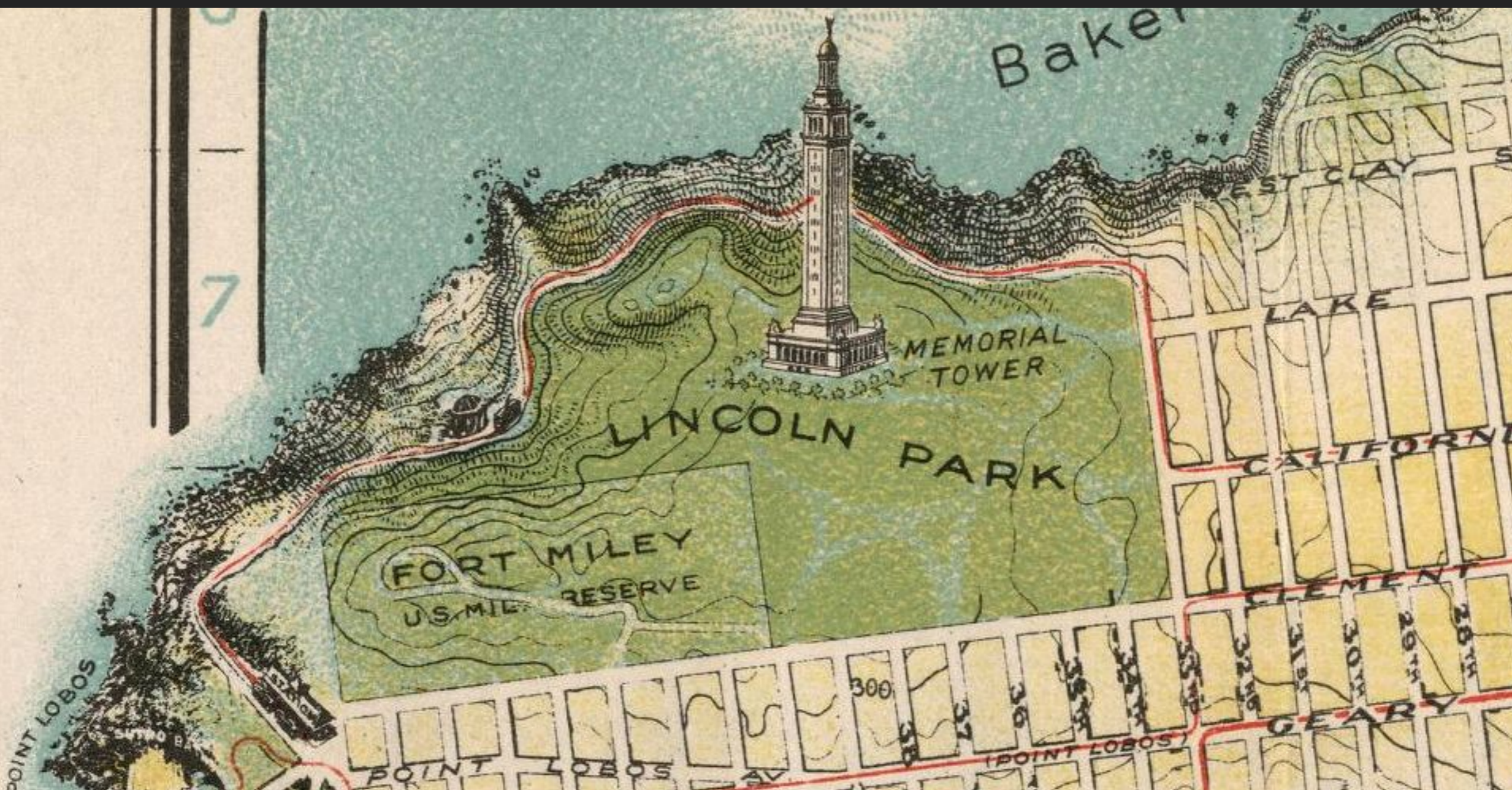
AV.

AV.

AV.

AV.

ASYLUM FOR FOUNDLING



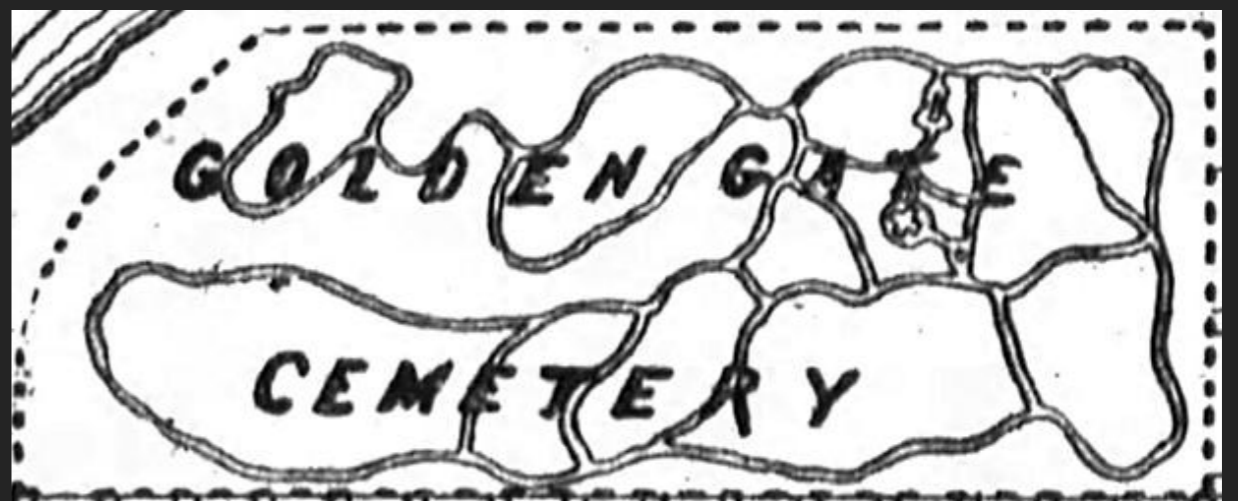
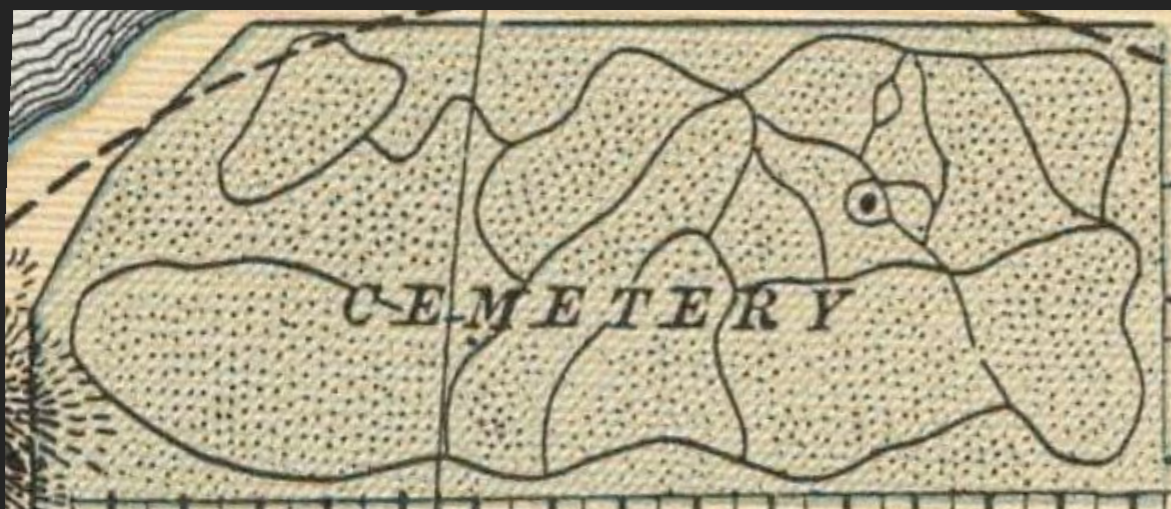
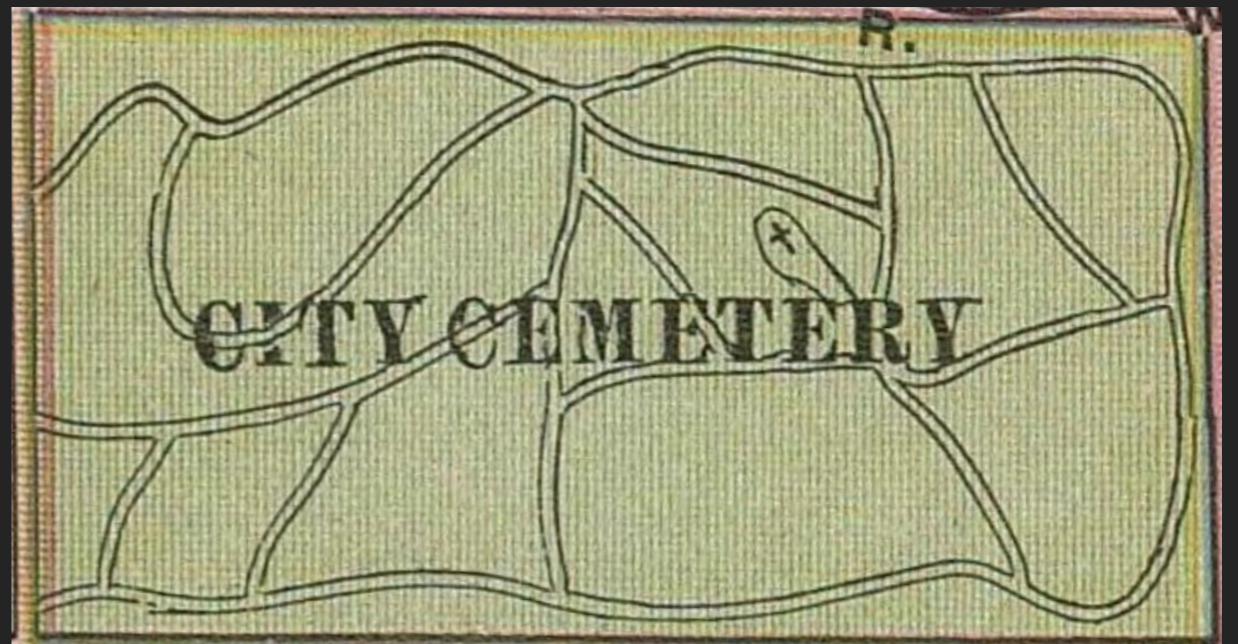
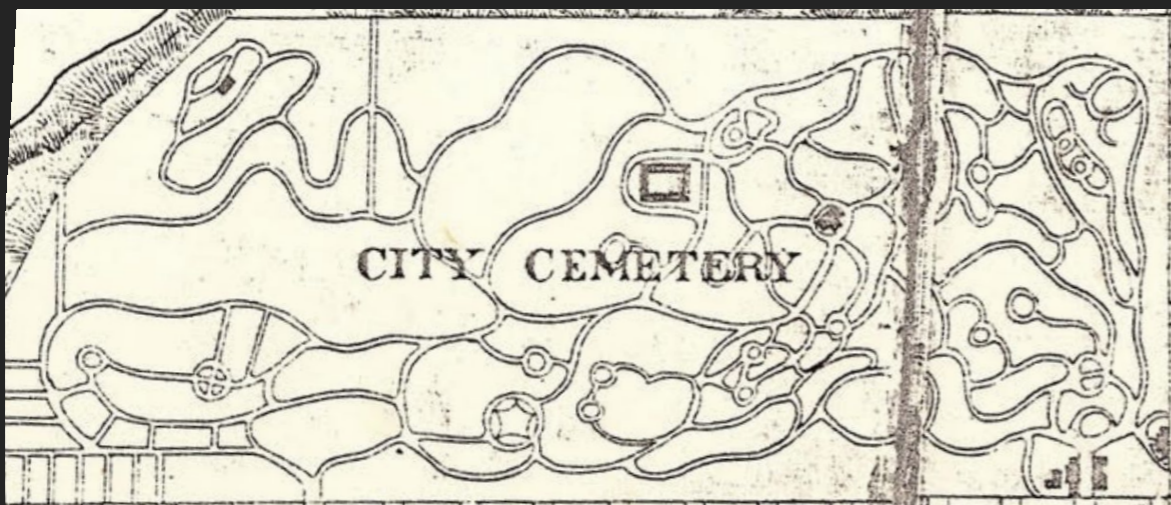
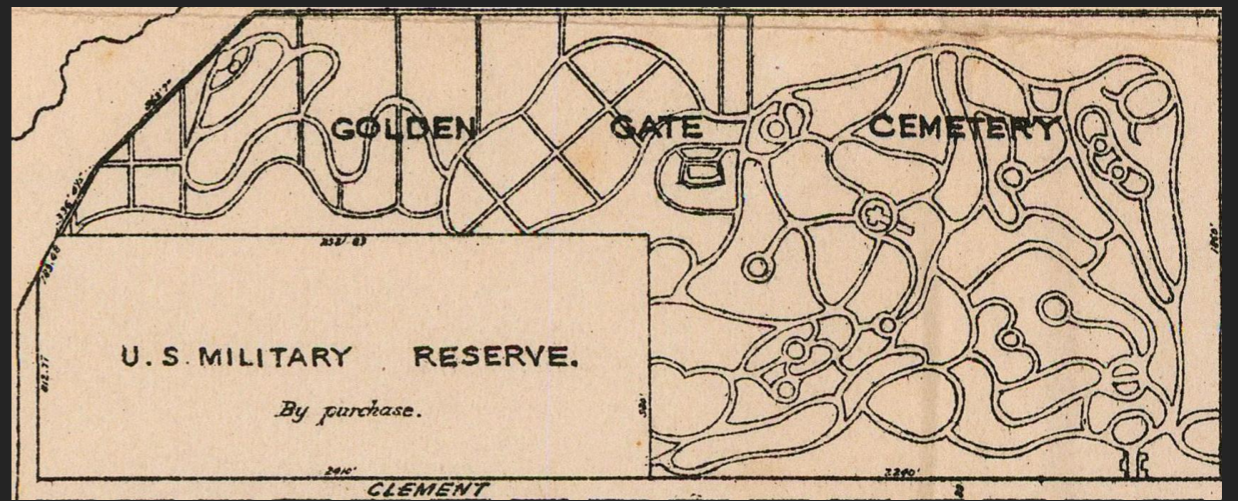
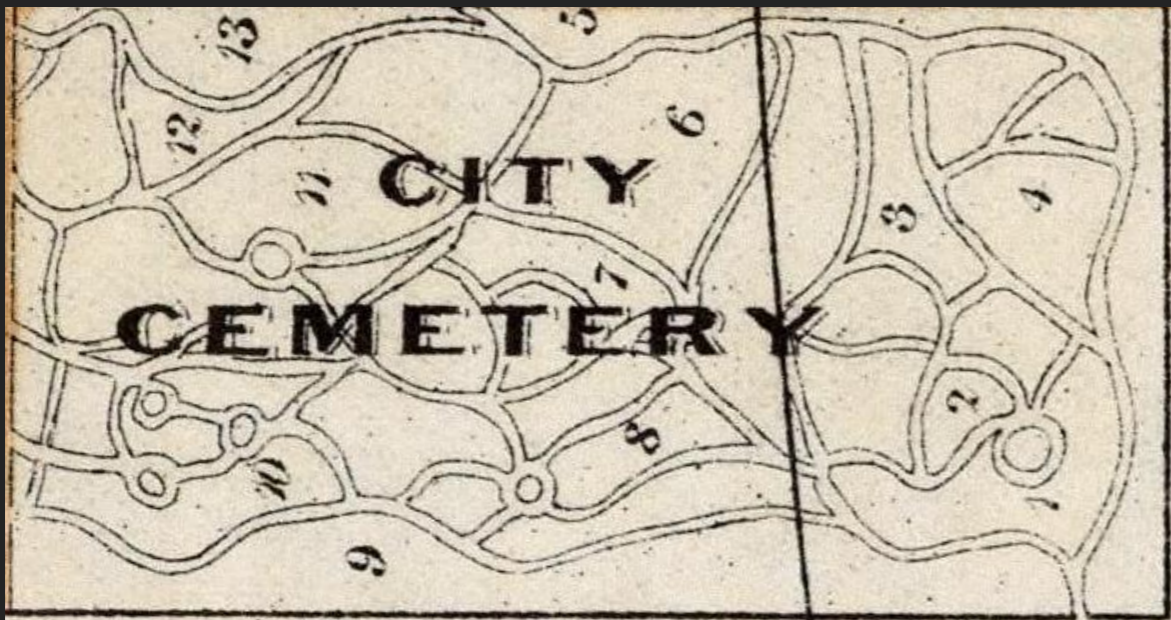


HONNEUR ET PATRIE











REPORT

OF THE

KEEPER OF THE CITY CEMETERY.

SAN FRANCISCO, July 26, 1880.

*To the Honorable the Board of Supervisors
of the City and County of San Francisco:*

GENTLEMEN—In accordance with resolution of your Honorable Body (No. 14,765 New Series) I beg leave to report, that for the fiscal year ending June 30, 1880, there have been interred in the City Cemetery, of the indigent dead, four hundred and twenty-four (424), of which six (6) were of African extraction, and fourteen (14) were natives of China.

Of the several societies to whom your Honorable Body have donated burial plots there have been interred—

From the Six Chinese Companies.....	475
French Mutual Benevolent Society.....	19
Beth Olam.....	9
Red Men.....	2
Italians.....	2
Christian Chinese.....	5

512

Making the total interments for the year nine hundred and thirty-six (936).
Total disinterments for the year seventeen (17).

DIAGRAM OF THE GROUNDS OF THE KNIGHTS OF PYTHIAS CEMETERY ASS'N. in GOLDEN GATE CEMETERY.

C. F. Carto, Architect. S. F. Ca.

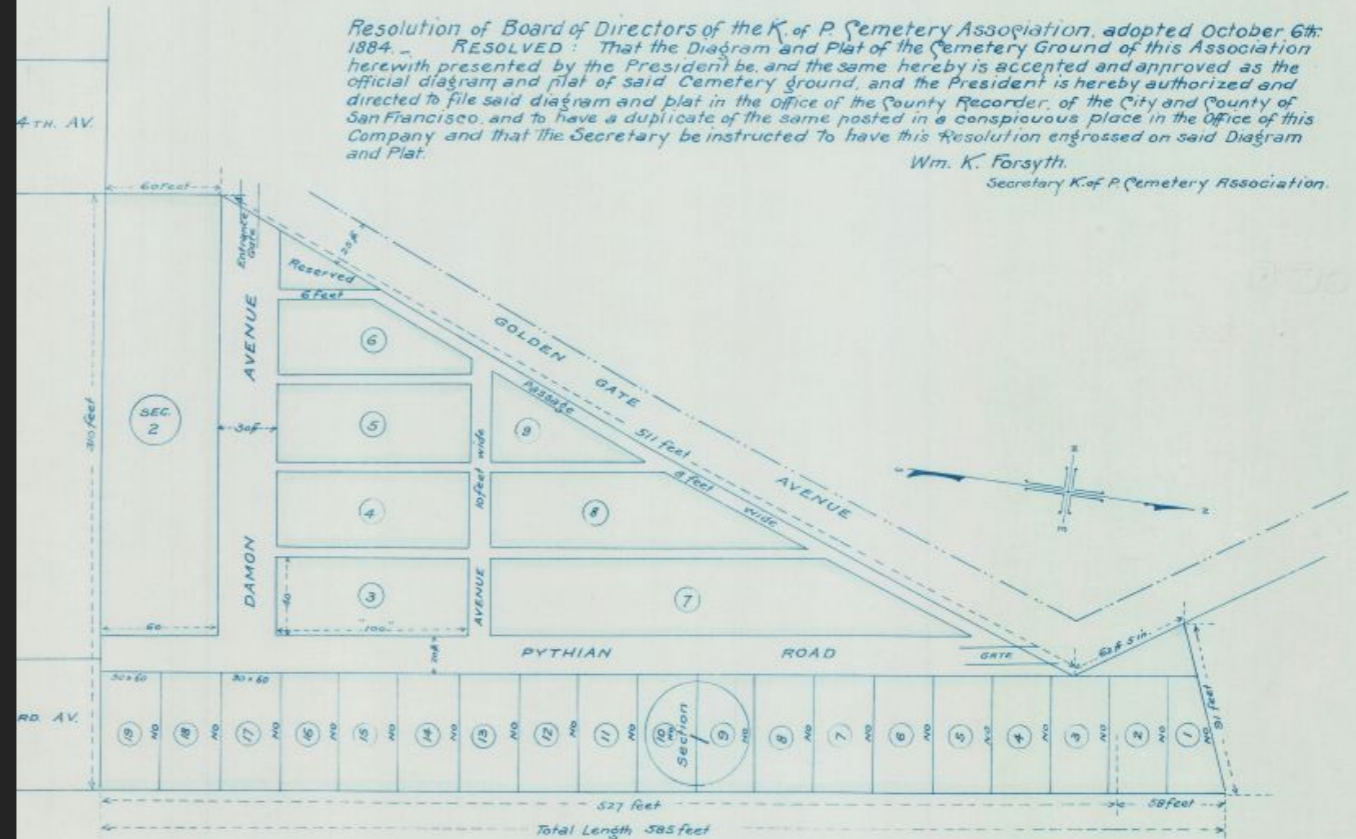
SCALE: 40 Feet = 1 Inch.

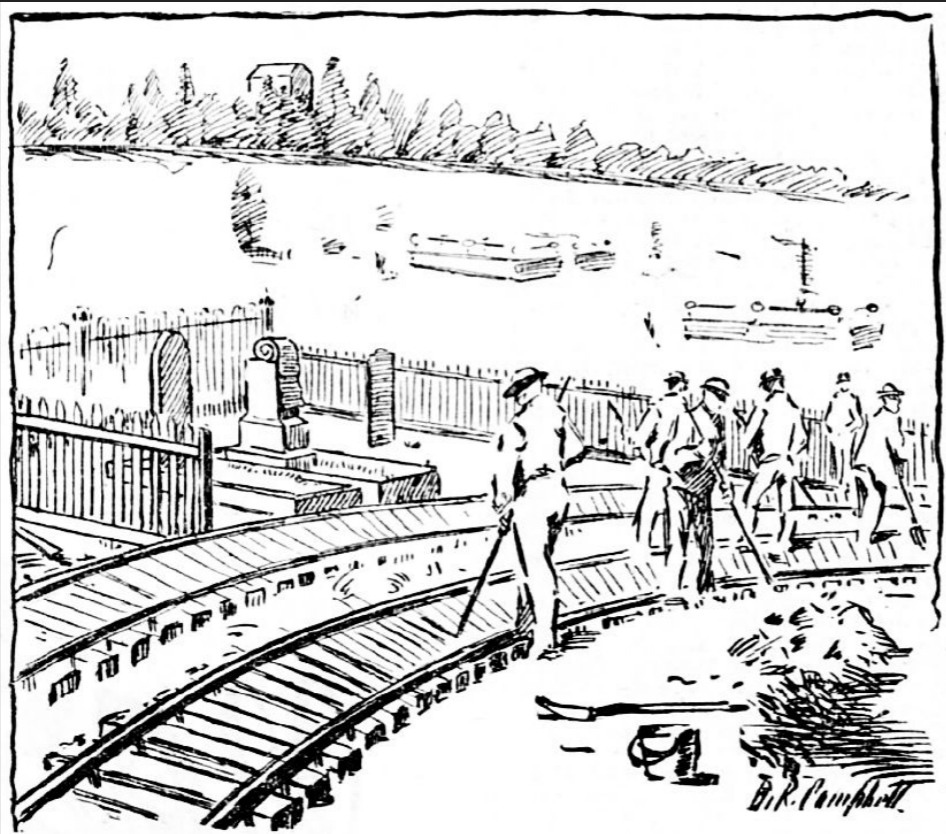
Recorded at the request of Board of Supervisors
November 16th. 1896. at 9 A. M. in Liber E. F. P. 10
Thos. O'Flynn,
County Recorder.

Filed at request of B. S. Duffy, August 4, 1885.
at 20 minutes past 2 o'clock, P. M.
D. M. Cashin,
County Recorder.

Resolution of Board of Directors of the K. of P. Cemetery Association, adopted October 6th. 1884. — RESOLVED: That the Diagram and Plat of the Cemetery Ground of this Association herewith presented by the President be, and the same hereby is accepted and approved as the official diagram and plat of said Cemetery ground, and the President is hereby authorized and directed to file said diagram and plat in the Office of the County Recorder, of the City and County of San Francisco, and to have a duplicate of the same posted in a conspicuous place in the Office of this Company and that the Secretary be instructed to have this Resolution engrossed on said Diagram and Plat.

Wm. K. Forsyth,
Secretary K. of P. Cemetery Association.





RAILROADING IN A GRAVEYARD.

AN INJUNCTION SERVED ON THE
BUILDERS OF SUTRO'S
NEW ROAD.

ANGRY KNIGHTS OF PYTHIAS.

MAYOR SUTRO'S ENGINEER SAYS
THEY ARE SCRATCHING HIM
FOR COIN.

An injunction was issued yesterday by Judge Slack against Mayor Sutro in his capacity as president of the People's Railroad Company to restrain that company from entering upon the City Cemetery property and laying its tracks over the graves that have remained undisturbed for five years.



The Yan Wan gate.

DESOLATE AND FORSAKEN

Neglected and Forlorn Condition of the
City Cemetery.

THE SUNKEN GRAVES OF THE POOR.

A Plot of Ground Covered With Long, Dry
Grass and Rattling Brush - Rotting
Headboards and Sticks for Footboards.

The blue waves of the bay dance gaily in the sunshine at the foot of the hills on which is the city's public burying-ground.

The Jewish section is full of green foliage, and the little grassplots are neatly trimmed and cared for.

High up on the hillside the gateways of the Chinese subdivision stand firm and tall.

Between these two there lies a tract of desolate land.

A land of graves, uncared for and seemingly forgotten. Here lie the city's pauper dead. The dry grass tangles thick and long, and here and there are bunches of scraggly



THE CITY CEMETERY.

Its Occupancy by Many
Societies.

SOME BEAUTIFUL SECTIONS.

The Resting-Place of Pioneers,
Italians, French and
Hebrews.

Situated on the plateau north of Point Lobos road, between Fort point and the Cliff House, is the City Cemetery, or Potter's Field, as it is more generally called. This name, however, is a misnomer, if applied generally to the cemetery, for but a very small portion of the tract is reserved for the burial of paupers. Not many people seem to know where the place is, and of these but few have been there, so that the general public has no idea whatever of the extent of the grounds or of the many improvements made upon them, but think the cemetery merely a sand heap, where the indigent dead are interred. The recent introduction into the Board of Supervisors of a resolution suggesting the re-



U.S. COAST AND GEODETIC SURVEY
J. E. HILGARD, SUPERINTENDENT.
SUPPLEMENTARY TOPOGRAPHY
SAN FRANCISCO BAY AND APPROACHES
SHEET N° 10
FORT POINT to POINT SAN JOSÉ
SAN FRANCISCO PENINSULA
CALIFORNIA.

Surveyed
APRIL
1852
By
L. A. Sengstler, Assistant
E. A. WIGGLEY, A.S.T.

Register N° 1032

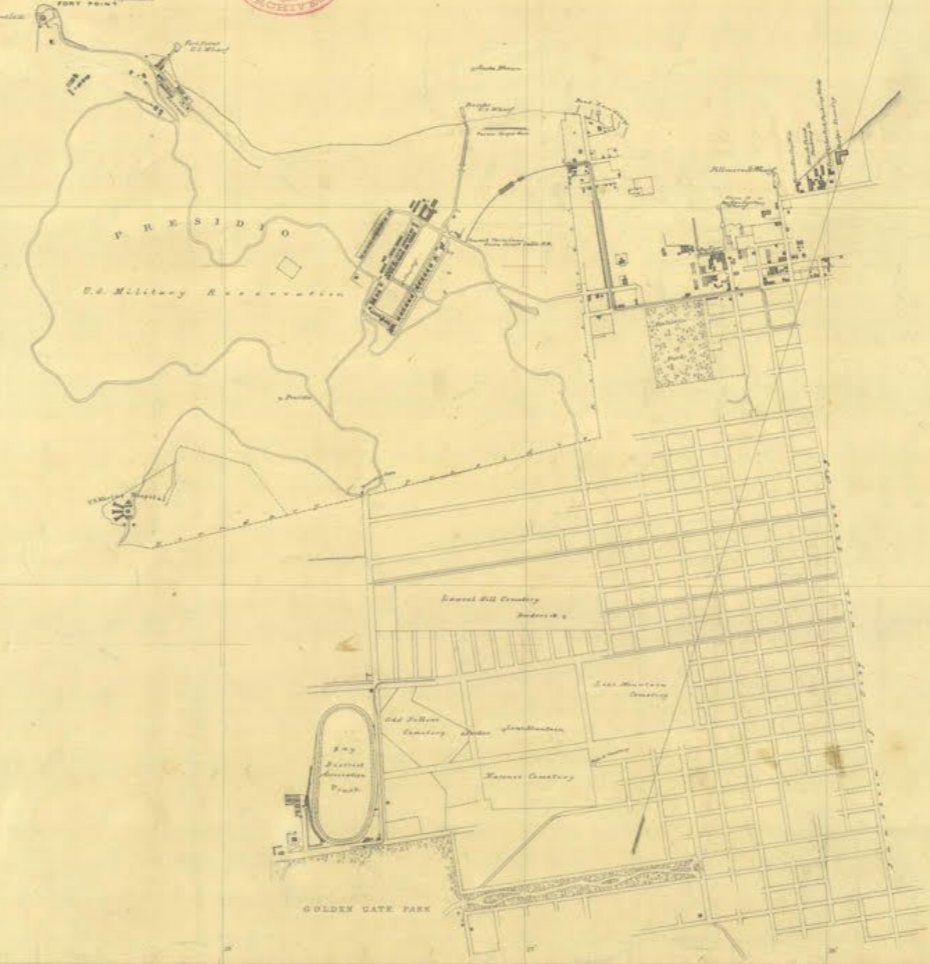
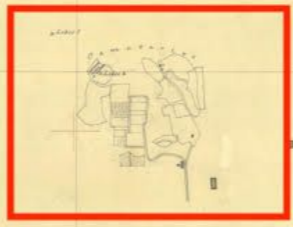
A. Leclercq
Surveyor in Charge of the U.S. Coast and Geodetic Survey

T. C. Mendenhall
FORT POINT



SAN FRANCISCO BAY

G
A
T
E
N
P
O
G



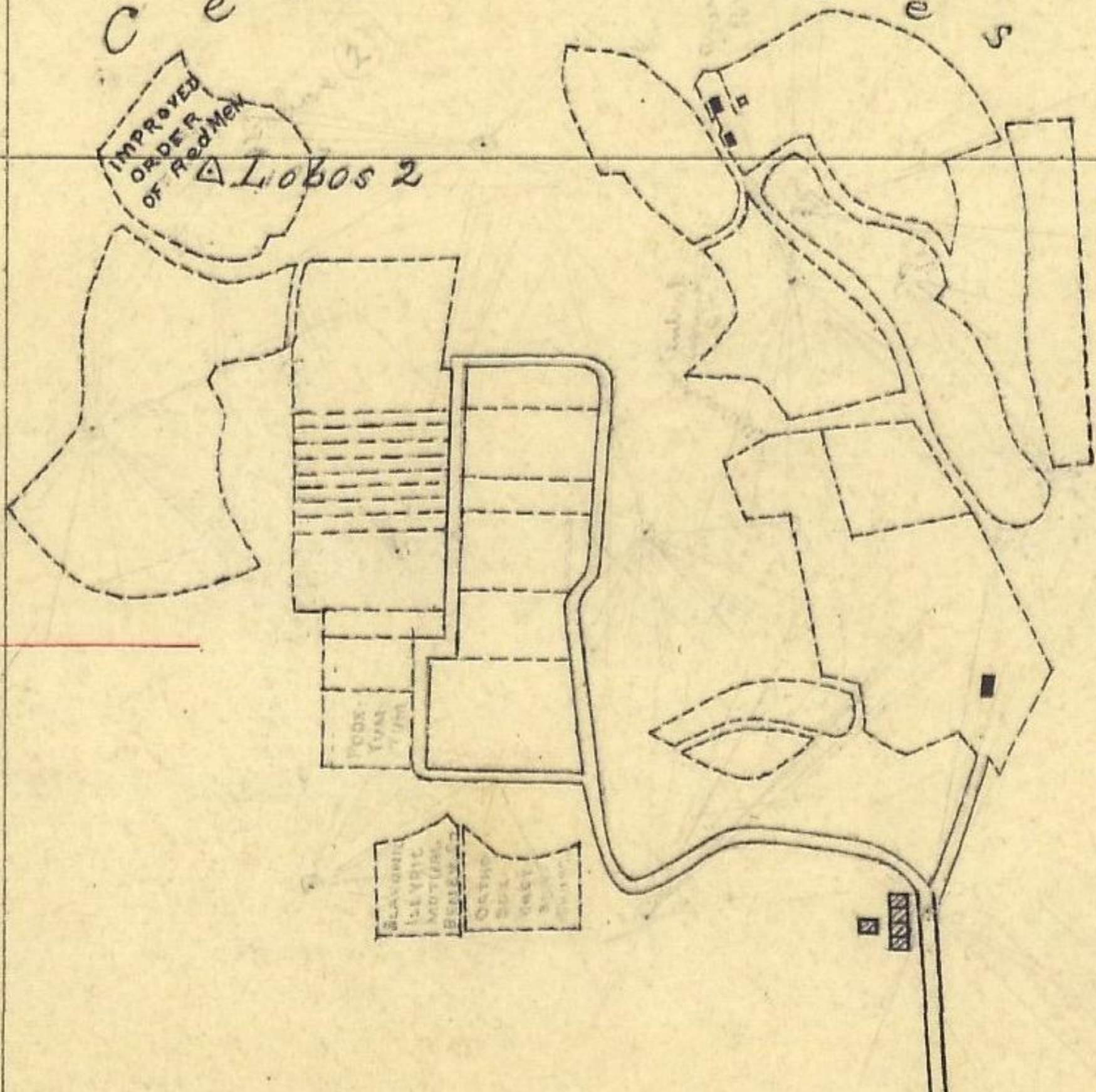
Done A. Doughty
Ad. W. H. H. H. H.
G. A. Nelson
A.S.T. U.S.C.G.S. Survey

△ Lobos 1

C e m e t e r i e s

IMPROVED
ORDER
OF RED MEN

△ Lobos 2



△ Lobos 1

C e m e t e r i e s

IMPROVED
ORDER
OF Red Men

△ Lobos 2

[Redacted]

[Redacted]

[Redacted]

BOOK
EXAM
1900

BLANKET
USE ONLY
MOUTHERS
BEARERS
OTHER
SIDE
ONLY
BUT
NOT

[Symbol]

[Symbol]







8790

CEMETERY

103

CALIFORNIA

150

CLEMENS

4720

△ Pt. Lobos 1

△ Pt. Lobos 3, 1892

8790

Pt. Lobos 2 △

△ Cogswells Monument

Cemeteries

C E M E T E R Y

△ Cemetery

103

CALIFOR

150

CLEME

4720

THE CITY CEMETERY.

Its Occupancy by Many Societies.

SOME BEAUTIFUL SECTIONS.

The Resting-Place of Pioneers, Italians, French and Hebrews.

Situated on the plateau north of Point Lobos road, between Fort point and the Cliff House, is the City Cemetery, or Potter's Field, as it is more generally called. This name, however, is a misnomer, if applied generally to the cemetery, for but a very small portion of the tract is reserved for the burial of paupers. Not many people seem to know where the place is, and of these but few have been there, so that the general public has no idea whatever of the extent of the grounds or of the many improvements made upon them, but think the cemetery merely a sand heap, where the indigent dead are interred. The recent introduction into the Board of Supervisors of a resolution suggesting the re-

△ Pt. Lobos 1

Lobos 3, 1892

Lobos 2 △

△ Cogswells Monument

Cemeteries

△ Cemetery

103

150

CLEME

△ Pt. Lobos 1

△ Pt. Lobos 3, 1892

8790

Master Mariners Benevolent Association

French M. B. Society

Improved Order of Red Men
Ladies Seamen's Friend Society

Pt. Lobos Fogswells Monument

Italian M.B. Society

City & County, Sec. 11

Japanese & Christian Chinese?

Cemeteries

City & County, Sec. 8

Chinese Six Companies Plots

Society of Old Friends

Jewish Cemeteries

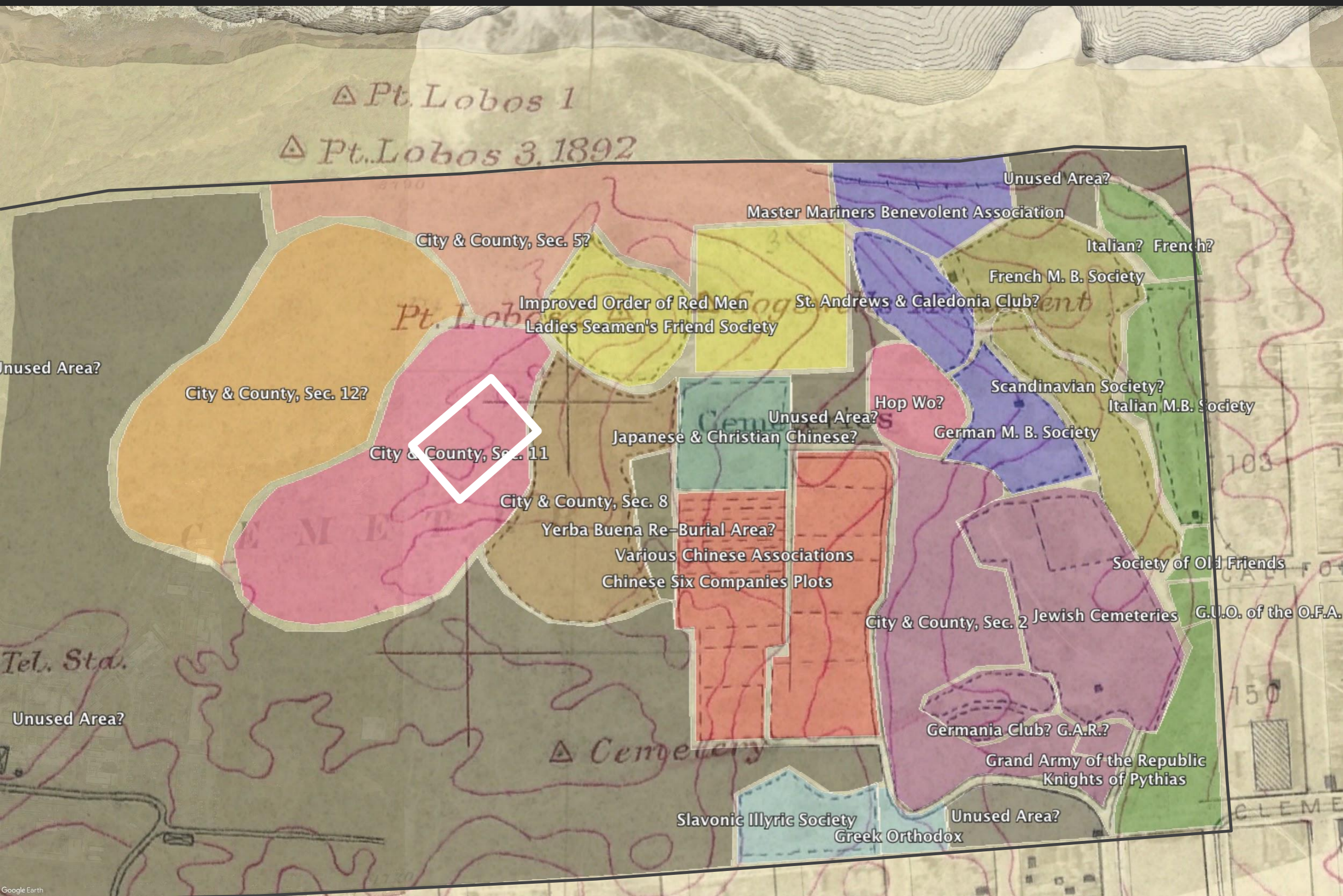
Tel. Sta.

△ Cemetery

Knights of Pythias

Greek Orthodox

4720



△ Pt. Lobos 1

△ Pt. Lobos 3, 1892

City & County, Sec. 5?

Improved Order of Red Men
Ladies Seamen's Friend Society

City & County, Sec. 12?

City & County, Sec. 11

City & County, Sec. 8

Yerba Buena Re-Burial Area?

Various Chinese Associations
Chinese Six Companies Plots

Japanese & Christian Chinese?

Unused Area?

Hop Wo?

German M. B. Society

City & County, Sec. 2

Jewish Cemeteries

Germania Club? G.A.R.?

Grand Army of the Republic
Knights of Pythias

Slavonic Illyric Society

Greek Orthodox

Unused Area?

Master Mariners Benevolent Association

Unused Area?

French M. B. Society

St. Andrews & Caledonia Club?

Scandinavian Society?

Italian M.B. Society

Italian? French?

Society of Old Friends

G.U.O. of the O.F.A.

Unused Area?

Unused Area?

City & County, Sec. 8

Section: 8
Blocks: All unassigned

Notes: Newspaper accounts (see below) describe Section 8 as having been in this general area and indicate that this section was an old potter's field--perhaps the cemetery's first--and the reburial area for those remains removed from Yerba Buena Cemetery in 1870. Thus we would expect any burials found here to date to the 1870s, as it is known that the burial of indigent dead had shifted to Section 2 by the early 1880s or before. However, the Legion of Honor seismic retrofit noted that an 1885 English coin was found in apparent association with Burial 757, which was found near the Joan of Arc statue. This seems out of place. Further analysis is needed.

"A short distance south [of the Signal flags], near an old fence, are seen several headboards peering up through the grass. As the visitor pursues his course he finds that the few boards he at first saw grow into hundreds, arranged in long dismal rows, and at last the Potter's Field is before him."

"The cemetery is in two sections, that first reached being the older, which is not now used."

Source: "The City Cemetery," San Francisco Chronicle, June 12, 1887

"Section 8 of the City Cemetery was the pioneer Potter's field, in which the paupers used to be buried in 1870. In last October it became necessary to open a new section for the burial of the indigent dead of the city--the men and women who died in the public institutions and from violent causes or who are unknown and without any ostensible friends or relatives.

"The recognized dead [of Yerba Buena, numbering approximately 300] were reburied in Section 8 of the cemetery, while the unknown dead were placed close together in an adjacent small corral. An immense headboard was set up, with the inscription:

"In memory of the unrecognized dead who died between the years 1849 and 1860, and were removed from Yerba Buena Cemetery in May, 1870. The graves had no distinct marks and the bodies were unrecognized."

Source: "Homes of the Dead," San Francisco Chronicle, August 19, 1883

"In the low ground west of the Chinese district are the remains of those who were removed from the old Yerba Buena cemetery. In a small inclosed plot in the center of the reservation are the bones of the unknown dead removed from Yerba Buena."

Source: "The City Cemetery," San Francisco Chronicle, June 12, 1887

"Then there are also the graves of 165 pioneers who were removed from yerba Buena Cemetery. All are buried under one headboard, which bears the inscription,

In Memory of the
UNKNOWN DEAD.

These men were Pionners, bur who they are and what they were nobody knows and nobody cares. Their graves are in a wilderness, and the Chinese as he passes from the railway station to the place where his own dead are laid, walks over the dust of the California Pioneers."

Source: "Amid the Graves," San Francisco Report, June 30, 1890.

Unused Area?

City & County, Sec. 12?

Tel. Sta.

Unused Area?



33RD AVE

POINT LOBOS ROAD
NOW GEARY BLVD

MAY-30-1900





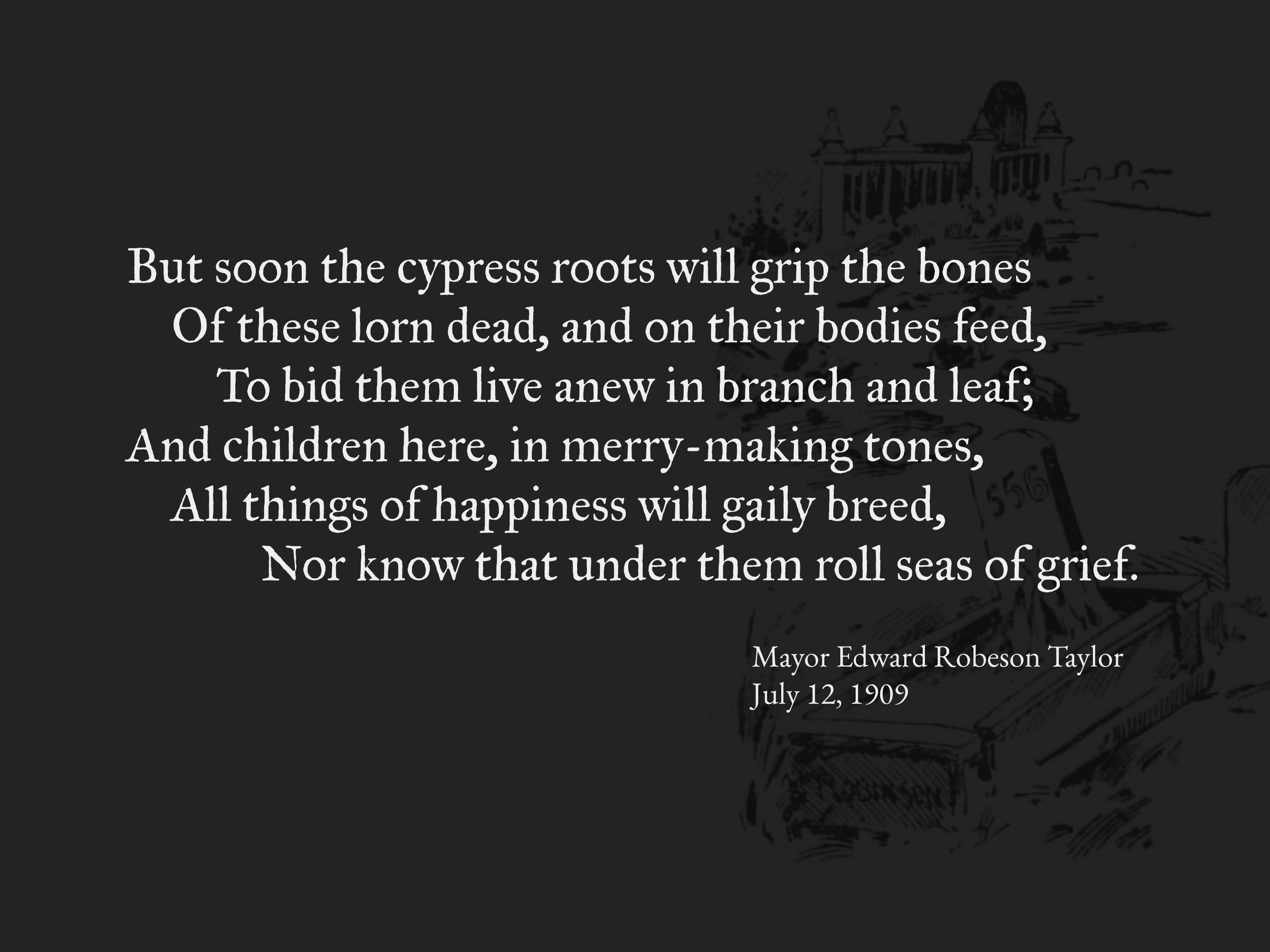




“It is now impossible to identify the graves, and those remaining will be leveled over and the tombs destroyed.”

San Francisco Chronicle
July 13, 1909





But soon the cypress roots will grip the bones
Of these lorn dead, and on their bodies feed,
To bid them live anew in branch and leaf;
And children here, in merry-making tones,
All things of happiness will gaily breed,
Nor know that under them roll seas of grief.

Mayor Edward Robeson Taylor
July 12, 1909

Results

- A map showing what parts of the cemetery were used when and by whom.
- City Cemetery was significantly larger than previously estimated—29,000 total interments, with a net cemetery size of 22,400 burials in 1898.

Results

- The remains of between 10,100 and 19,700 people are estimated to remain.
- City Cemetery wasn't removed; it still exists.



Alex Ryder

alex@pasttense.co

www.pasttense.co